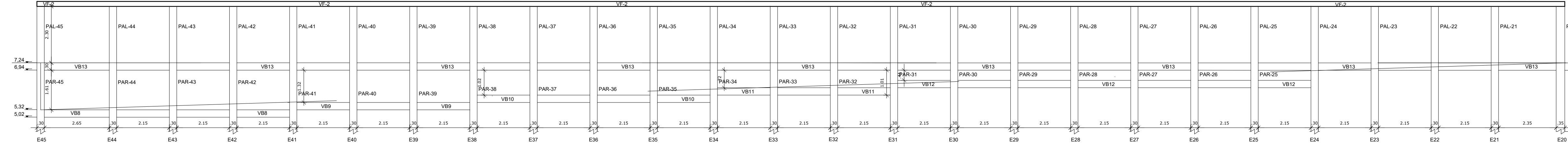
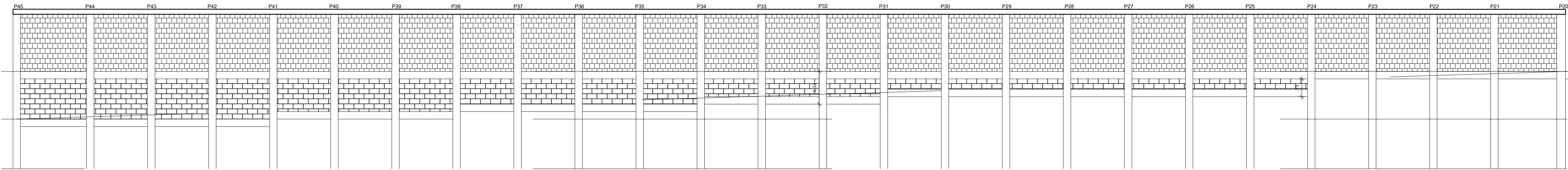
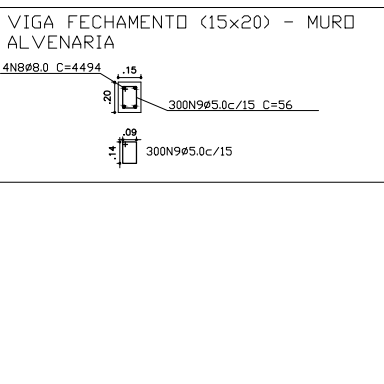
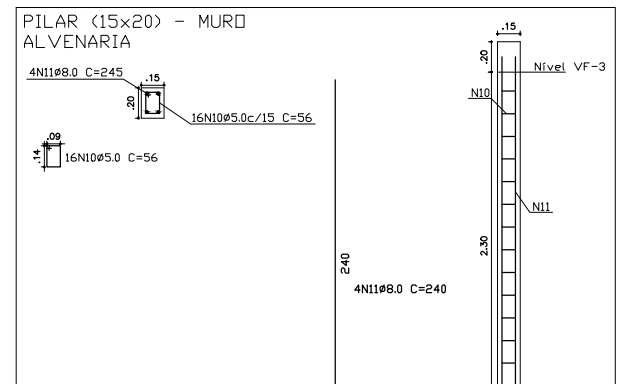
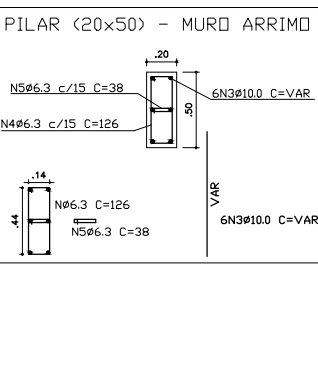
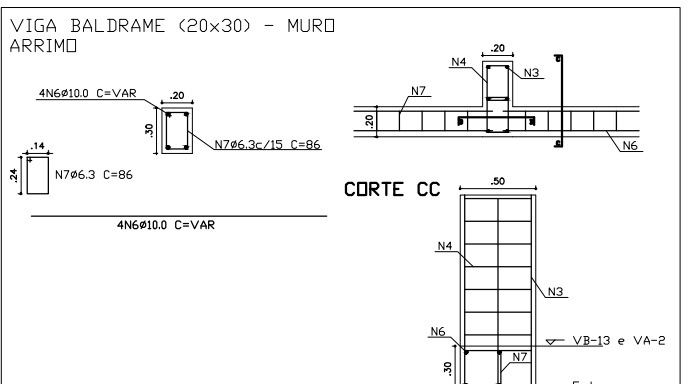
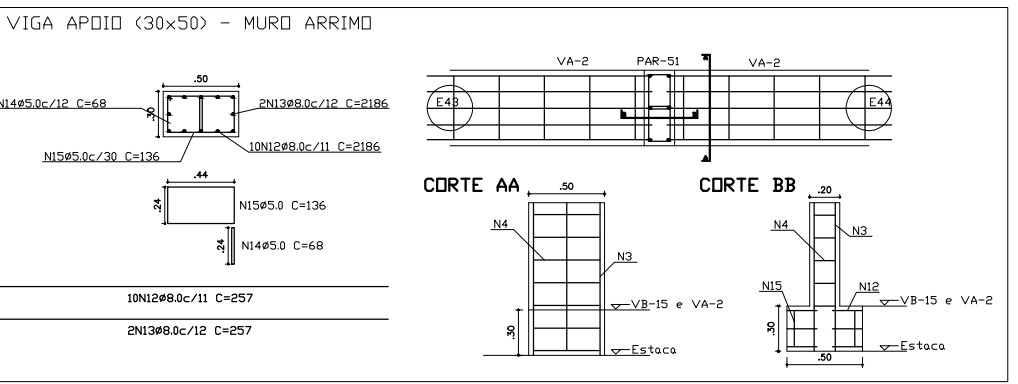
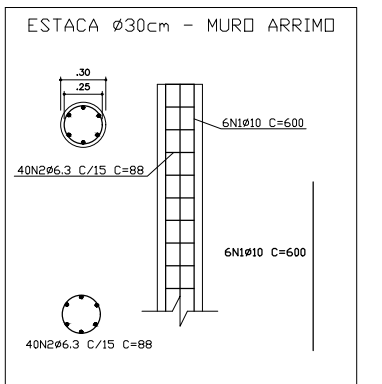
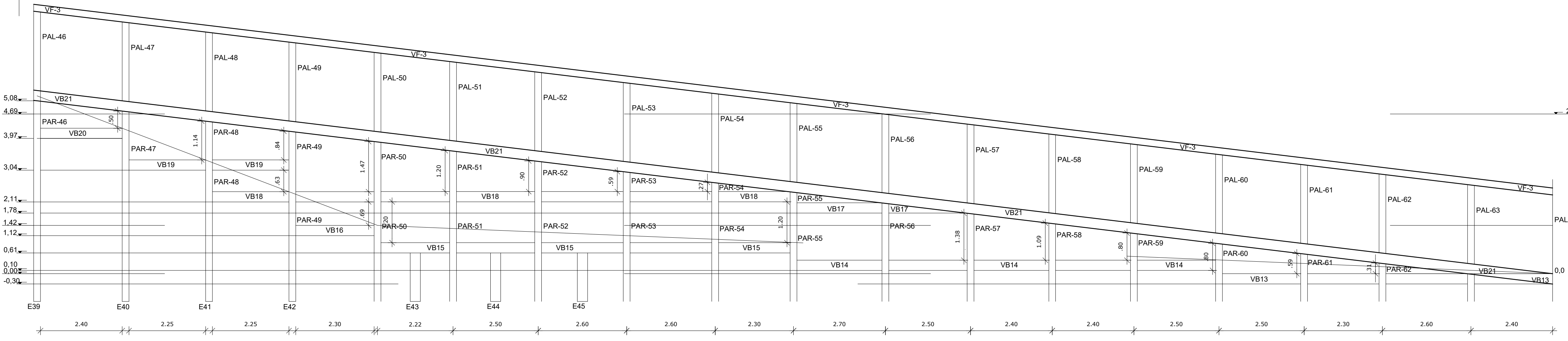
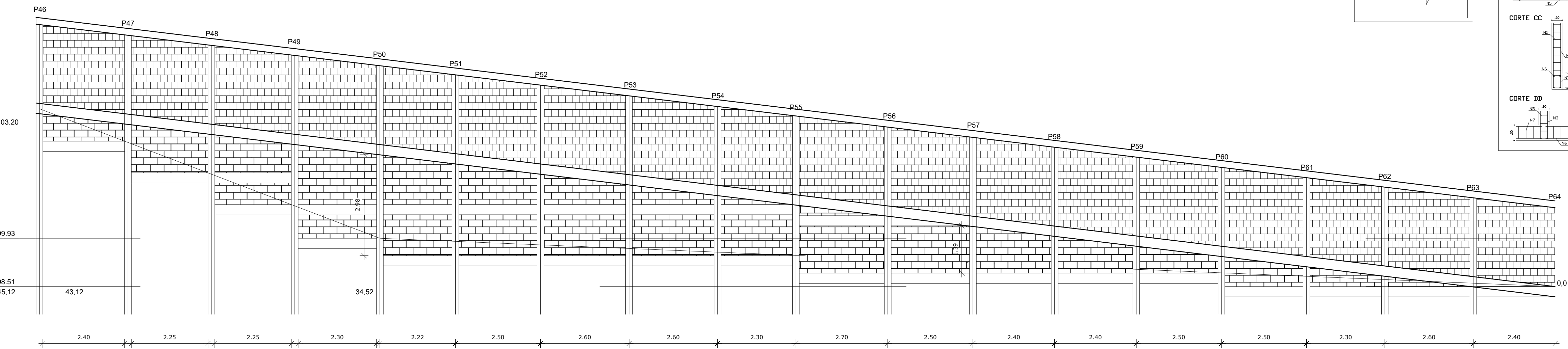


FACE H-H



- ESTACA Ø30cm - MURD ARRIMO
- VIGA APDIO (30x50) - MURD ARRIMO
- VIGA BALDRAME (20x30) - MURD ARRIMO
- PILAR (20x50) - MURD ARRIMO
- PILAR (15x20) - MURD ALVENARIA
- VIGA FECHAMENTO (15x20) - MURD ALVENARIA
- TERRENO
- NÍVEL

FACE D-D



TÍTULO:					
MURO DE FECHAMENTO DA CRECHE MUNICIPAL					
DETALHE:					
PROJETO ESTRUTURA E ARQUITETÔNICO					
PROPRIETÁRIO:			DOCUMENTO:		
PREFEITURA MUNICIPAL DE RIO PARANAIBA			CNPJ N°: 18.602.045/0001-00		
ENDEREÇO:					
Rua Irradiante, N° 340 - Bairro Olhos D'Água - Rio Paranaíba/MG					
			AUTOR DO PROJETO:		
			SECRETARIA DE INFRAESTRUTURA, TRANSPORTE E OBRAS Prefeitura Municipal de Rio Paranaíba/MG		
			R.T.:		
PREFEITURA:			LIRISLAINE BOAVENTURA DE MELO Engenheira Civil / CREA N°189.107/D MG		
			PROPRIETÁRIO:		
			PREFEITURA MUNICIPAL DE RIO PARANAIBA CNPJ N°18.602.045/0001-00		
ÁREAS	CONSTRUÍDA (m²)	A INCLUIR (m²)	A DEMOLIR (m²)	A CONSTRUIR (m²)	TOTAL (m²)
PRINCIPAL	-	-	-	-	-
DEPENDÊNCIA	-	-	-	-	-
SETOR:	QUADRA:	LOTDE:	ESCALA:		DATA:
00	000	0000	INDICAR		01/03/2024
					02/03